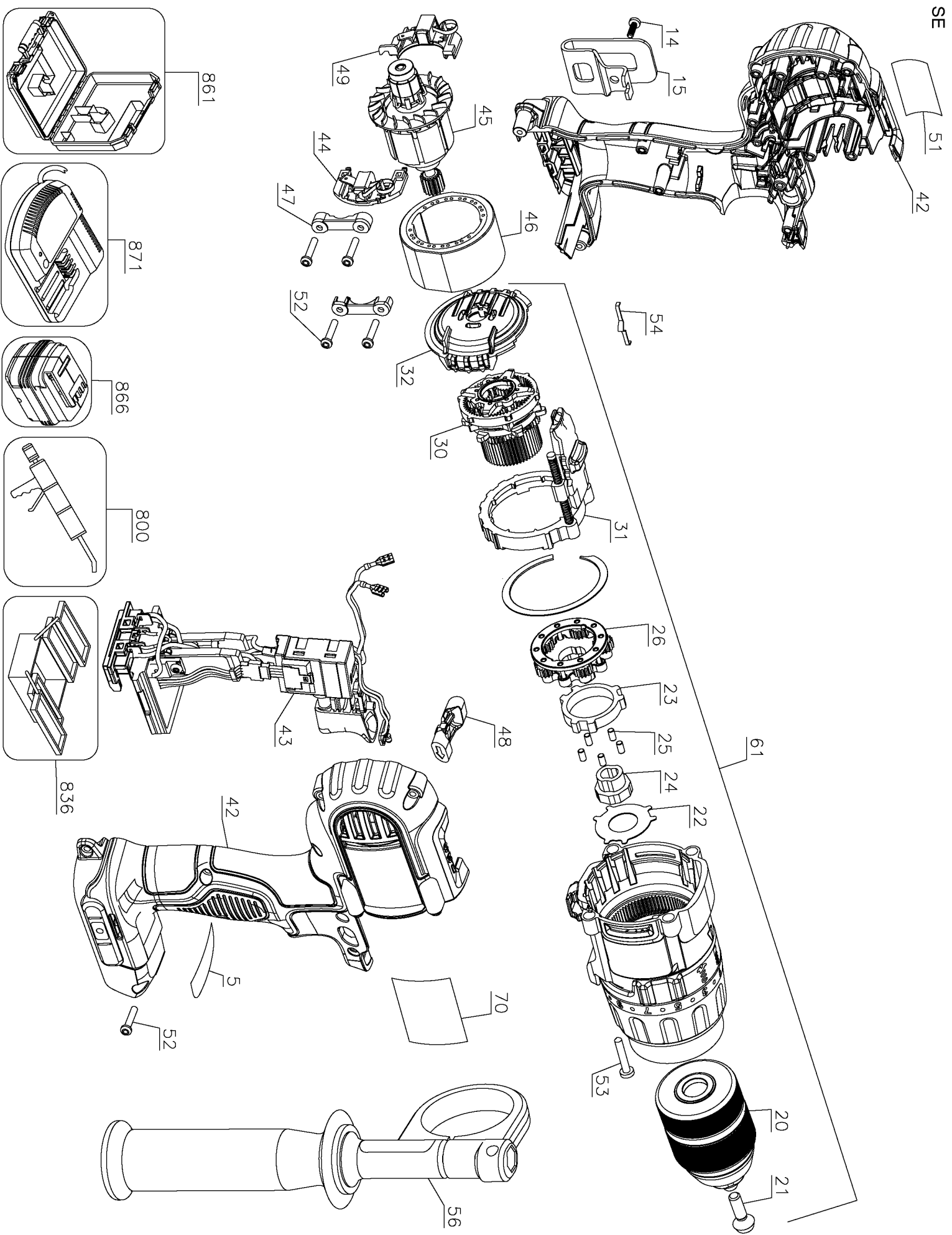


SE



Parts List for DCD985M2 Type 2

Item Number	Part Number	Description	Qty Required
5	N078823	WARNING LABEL (SPA)	1
14	N042665	MACHINE SCREW	1
15	N268241	BELT HOOK KIT	1
20	N242399	KEYLESS CHUCK	1
21	605256-01	SCREW	1
22	652378-00	RETAINING PLATE	1
23	650470-00	LOCK RING	1
24	652379-00	ANVIL	1
25	654110-00	PIN	5
26	N388924	GEAR ASSEMBLY	1
30	N388150	GEAR ASSEMBLY	1
31	N388923	SHIFTER ASSEMBLY	1
32	N347360	BAFFLE ASSEMBLY	1
42	N043352SV	CLAMSHELL,SET	1
43	N421209	SWITCH RETROFIT KIT	1
43	N357019	SWITCH ASSEMBLY	1
44	N031214	BRUSH BOX SET	1
45	N372159	ARMATURE ASSEMBLY	1
46	N230576	MAGNET RING	1
47	N007948	BEARING CAP	1
48	N091392	F/R BUTTON	1
49	N031214	BRUSH BOX SET	1
51	N091729	IDENT. LABEL	1
52	682211-00	SCREW PLASTITE	13
53	330019-52	SCREW PLASTITE	4
54	N014681	DETENT SPRING	2
56	N389651	SIDE HANDLE	1

COPYRIGHT© 2005. All Rights Reserved.

Parts list, pricing, and availability subject to change. Please visit www.dewaltservicenet.com for current parts information.

Parts List for DCD985M2 Type 2

Item Number	Part Number	Description	Qty Required
61	N211314	GEARCASE ASSY	1
70	N447036	RATING LABEL	1
70	N577220	RATING LABEL	1
800	N017298	GREASE	1
836	596004-99	INSERT	1
836	000000-00	No Longer Available	1
836	233804-40	CHUCK REMOVAL FIXTURE	1
836	559662-99	MANDREL	1
861	N303239	KITBOX	1
866	DCB204	BATTERY PACK	2
871	DCB115	CHARGER	1

COPYRIGHT© 2005. All Rights Reserved.

Parts list, pricing, and availability subject to change. Please visit www.dewaltservicenet.com for current parts information.